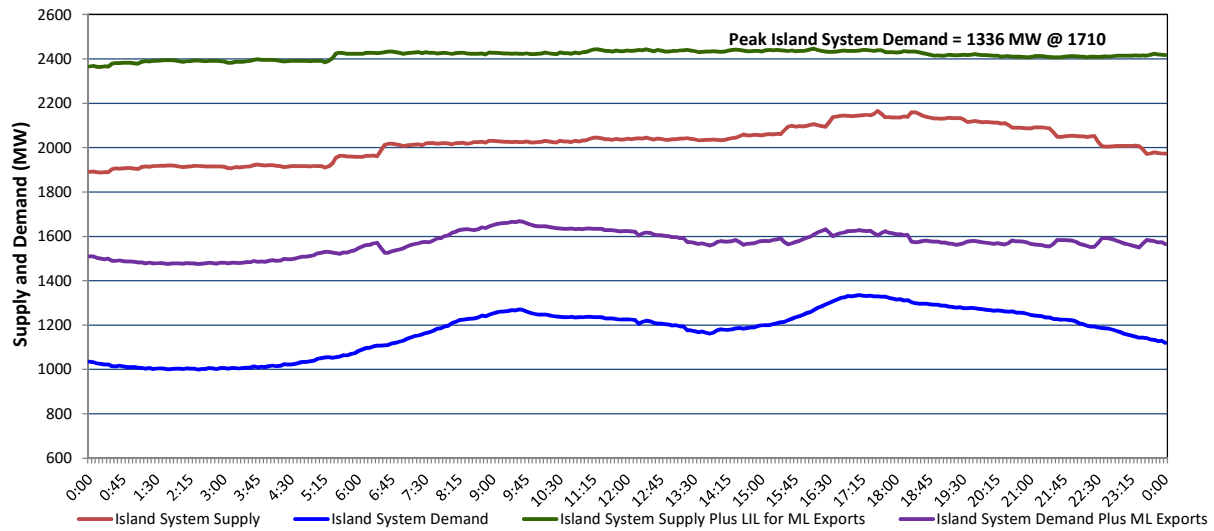


Newfoundland Labrador Hydro (NLH) Supply and Demand Status Report Filed Monday, December 16, 2024

Section 1 Island Interconnected System - Supply, Demand & Exports Actual 24 Hour System Performance For Saturday, December 14, 2024



Island Supply Notes For December 14, 2024 ¹

A As of 0000 hours, October 20, 2024, Holyrood Unit 1 unavailable due to forced extension to planned outage (170 MW).

Section 2 Island Interconnected System - Supply, Demand & Outlook

| Sun, Dec 15, 2024 | Island System Outlook ² | Seven-Day Forecast | Island System Daily Peak Demand (MW) | |
|--|------------------------------------|------------------------------|--------------------------------------|-----------------------|
| | | | Forecast ⁸ | Adjusted ⁶ |
| Island System Supply: ⁴ | 2,115 MW | Sunday, December 15, 2024 | 1,425 | 1,345 |
| NLH Island Generation: ^{3,7} | 1,525 MW | Monday, December 16, 2024 | 1,345 | 1,265 |
| NLH Island Power Purchases: ⁵ | 120 MW | Tuesday, December 17, 2024 | 1,300 | 1,220 |
| NP and CBPP Owned Generation: | 220 MW | Wednesday, December 18, 2024 | 1,235 | 1,155 |
| LIL/ML Net Imports to Island: ⁹ | 250 MW | Thursday, December 19, 2024 | 1,255 | 1,175 |
| | | Friday, December 20, 2024 | 1,310 | 1,230 |
| 7-Day Island Peak Demand Forecast: | 1,425 MW | Saturday, December 21, 2024 | 1,370 | 1,290 |

Island Supply Notes For December 15, 2024

- Notes:
1. Generation outages for running and corrective maintenance are included. These are not unusual for power system operations. They generally do not impact customer supply. Hydro schedules outages to system equipment whenever possible to coincide with periods when customer demands are low and sufficient supply reserves are available. However, from time to time equipment outages are necessary and reserves may be impacted.
 2. As of 0800 Hours.
 3. Gross continuous unit output.
 4. Gross output from all Island sources (including Note 4).
 5. NLH Island Power Purchases include: ML Imports, Exploits Generation, Rattle Brook, Star Lake, Wind Generation and capacity assistance (when applicable).
 6. Adjusted for interruptible load and the impact of voltage reduction when applicable.
 7. Due to limitations inherent in the design of combustion turbines, the output of combustion turbines may be reduced in the event that ambient temperatures exceed the threshold required for full rated output. This threshold is dependent on the design of each turbine.
 8. Does not include ML Exports.
 9. LIL Import sunk in the Island System. Actual LIL flows will be restricted by various system conditions including, but not limited to, Island Load, ML Exports and Avalon Unit status.

Section 3 Island Peak Demand and Exports Information Previous Day Actual Peak and Current Day Forecast Peak

| | | | |
|-------------------|----------------------------------|-------|-----------|
| Sat, Dec 14, 2024 | Island Peak Demand ¹⁰ | 17:10 | 1,336 MW |
| | Exports at Peak | | 293 MW |
| | LIL Net Imports to Island | | 4,429 MWh |
| Sun, Dec 15, 2024 | Forecast Island Peak Demand | | 1,425 MW |

Notes: 10. Island Demand is supplied by NLH generation and purchases, LIL Imports plus generation owned and operated by Newfoundland Power and Corner Brook Pulp & Paper (Deer Lake Power, DLP).